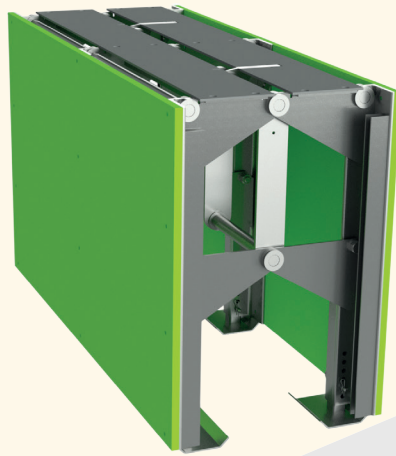


# SHORE TRENCH<sup>®</sup>

TRENCH SUPPORT SYSTEMS



## USER GUIDE

DRIVE OVER TRENCH SUPPORTS  
DOTS<sup>™</sup>

## GET IN TOUCH

01244 735 888

[info@shoretrench.co.uk](mailto:info@shoretrench.co.uk)

[www.shoretrench.co.uk](http://www.shoretrench.co.uk)

# IMPORTANT NOTES



- 11 All excavation work must be thoroughly planned before work commences on site to identify hazards and assess risk.
- 11 These instructions form guidance for the typical installation of Trench Box Equipment. Non-standard applications should be approved by a suitable qualified engineer.
- 11 Ensure all personnel engaged in installation operations are properly trained, briefed and adequately supervised by a competent person.

## INTRODUCTION

### **DOTS MODEL: IS AVAILABLE IN A RANGE OF TRENCH BOX SIZES WITH VARIOUS OPTIONAL COMPONENTS:**

- 11 **lifting beams**
- 11 **lifting chains**
- 11 **interior lighting**
- 11 **shutter boards**
- 11 **ground mats**

ShoreTrench™ systems are the first choice for rapid shoring of trench runs due to the speed and simplicity of installation. Delivered pre-assembled and ready to deploy. They are suitable for use in trenches up to 3.5m wide x 2.3m deep and used in multiples to continuously support a length of trench.

The Drive Over Trench Support (DOTS) unit is designed to provide an immediate support solution to an excavated trench, where safety and time efficiencies are of the utmost importance.

Due to the design of the unique installation and extraction mechanism, deployment of the DOTS units can be undertaken in minutes and can save significant amounts of time when compared to traditional shoring systems. During the extraction process, the unit safely concertinas inwards and suction pressures are significantly reduced, providing a smoother lifting action. This unique design ensures quick redeployment cycle times can be achieved in a safe and timely manner.

---

For added safety, the DOTS unit is fitted as standard with a patent protected Molyplate™ providing the ultimate solution in protection from trench collapse.

The Molyplate™ heavy duty mechanism eliminates the need for assembly prior to installation, and adjustable foot screws provide 0-500mm height adjustment for each unit.

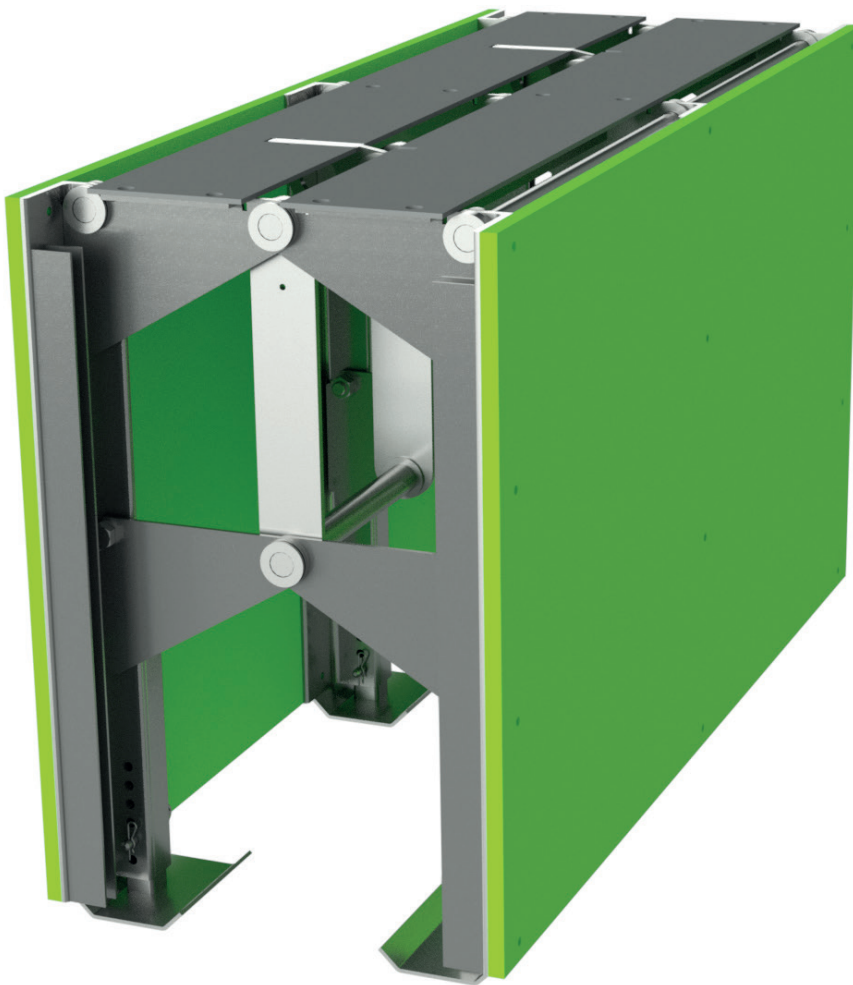
# IMPORTANT NOTES



- ]] Maintain a means of safe access at all stages for the provision of contractor risk assessments.
- ]] The end-user has a responsibility under LOLER to ensure that all lifting equipment is suitable and fit for use including appropriate and valid certification.
- ]] Avoid the trapping of fingers at all stages of work.

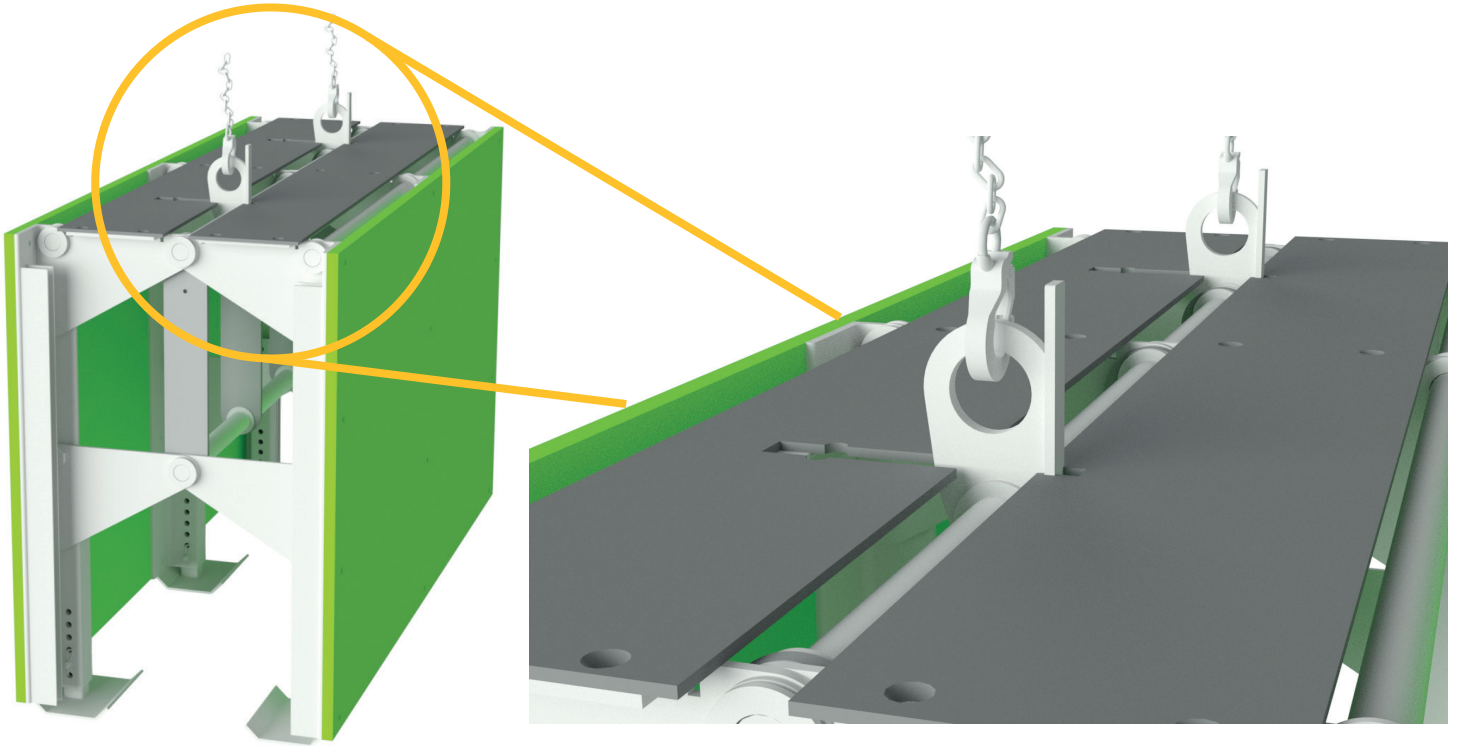
## INSTALLATION PROCEDURE

- ]] Position lifting plant above the trench support unit

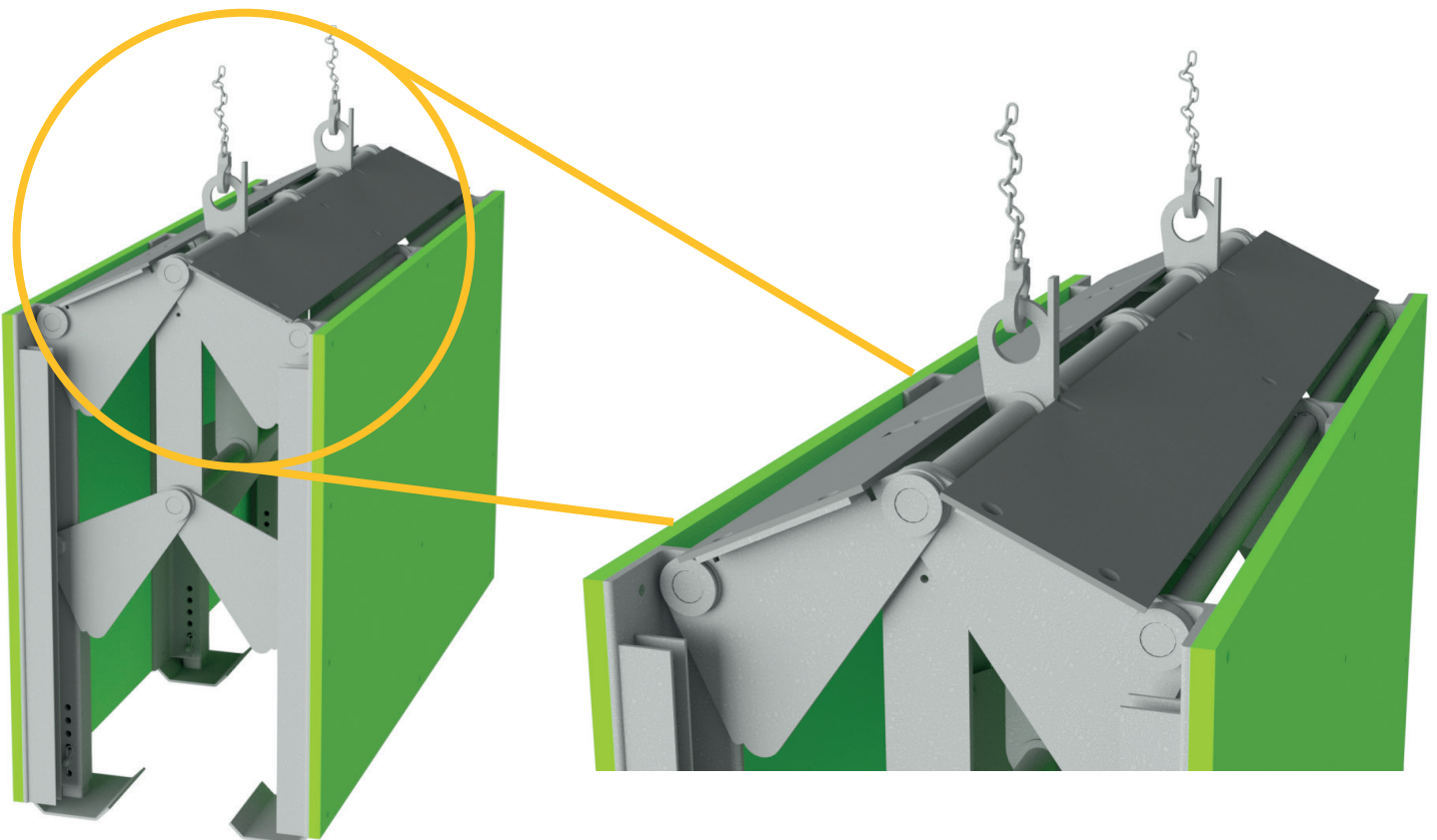


## INSTALLATION PROCEDURE

][ Attach hooks to lifting points

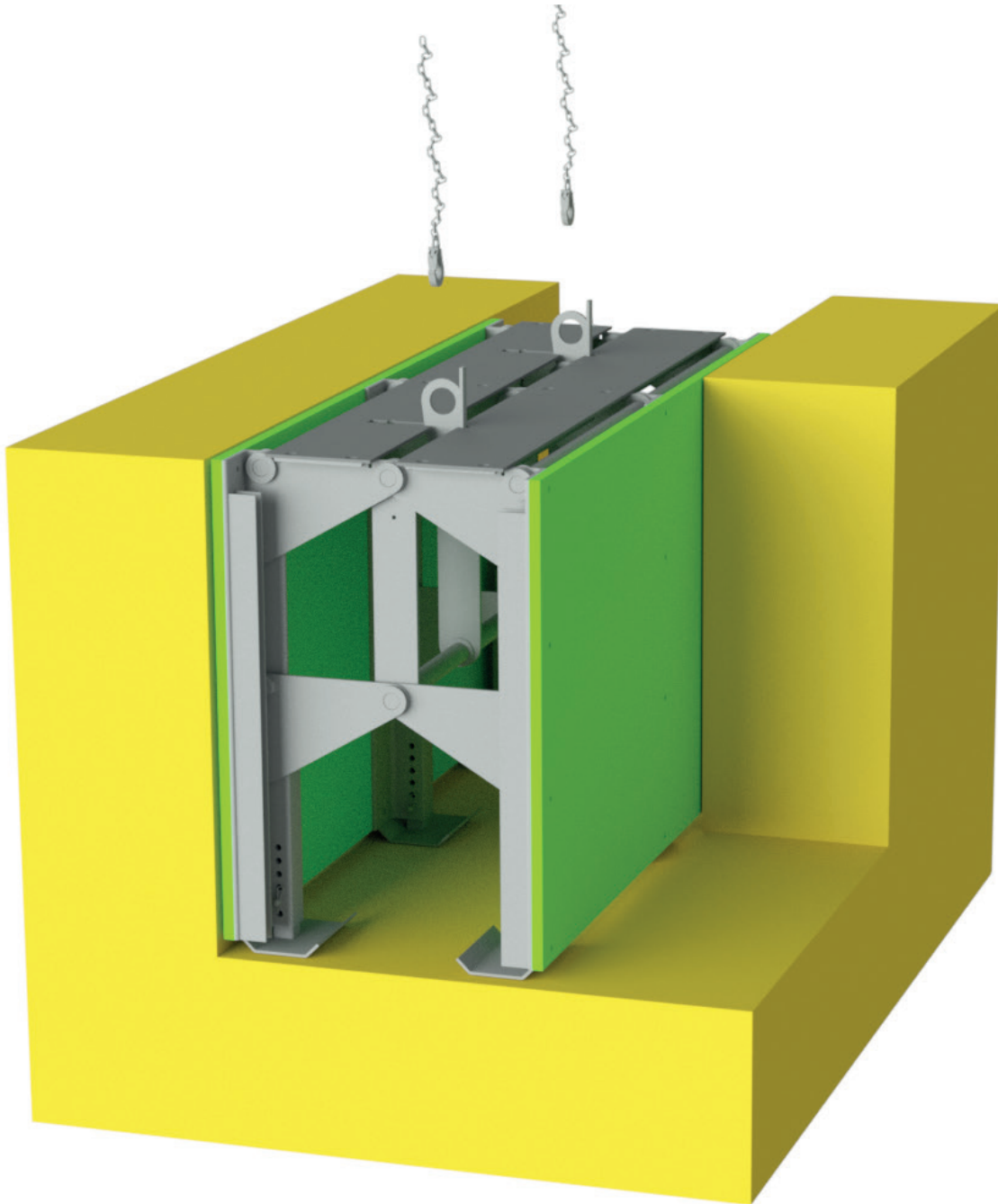


][ Lift vertically and deploy into position



## INSTALLATION PROCEDURE

- ]] Lower trench support unit into position and push down middle with plant to deploy unit
- ]] Release hooks and fold down lifting eyes



## EXTRACTION PROCEDURE

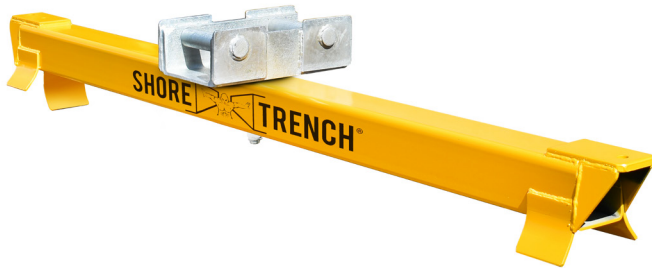
- ]] Attach hooks to lifting points
- ]] Lift trench support unit vertically to retract sides
- ]] Lift out of excavation



## OPTIONAL ATTACHMENTS

The ShoreTrench™ range is accompanied by various safety attachments including lifting beam, lifting chains, ground mats, interior lighting and shutter boards, which are easily installed on the boxes. These items are detailed below

]] Lifting Beam



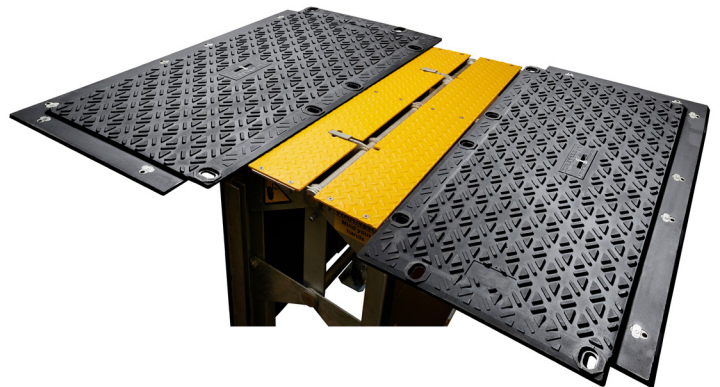
]] Lifting Chains



]] Shutter Boards



]] Ground Mats



]] Interior Lighting





## HOW TO USE

- 11 Inspect all components at the start of every shift
- 11 Assess weights correctly and use adequate and appropriately certified lifting equipment. Ensure hooks engage fully into lifting points prior to lifting
- 11 Ensure triple locks are secured in the lock position
- 11 Use only lifting or handling points for chain attachment
- 11 Provide support over the full height of the dig
- 11 Provide edge protection
- 11 Keep personnel clear of excavator slew zone
- 11 Always use a banksman
- 11 Locate underground services before excavating
- 11 Store assembled boxes on firm, level ground only or lay flat on their sides
- 11 Always work from a safe area to avoid the risk of falls from height
- 11 Non-standard installation methods must be approved by a competent person
- 11 Take care to avoid trapping fingers



## DO NOT

- 11 Exit the trench box into an unsupported area
- 11 Use mobile phones during operations unless in the event of an emergency
- 11 Push units down by more than 50mm at a time
- 11 Snatch the chain whilst extracting the box
- 11 Use handling points for lifting or pulling
- 11 Jump into the units, always use foot plates or secured ladder
- 11 Hang or store other materials onto units
- 11 Accidentally strike the trench boxes
- 11 Drag the box by any means
- 11 Install in flooded ground
- 11 Store/stack the units more than 3 boxes high
- 11 Excessively force the box into the ground
- 11 Enter an unsupported trench